



The absolute opposite of ordinary

GeoBox for Creative Design

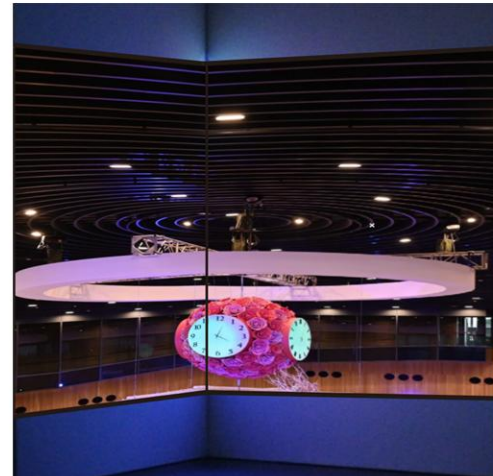
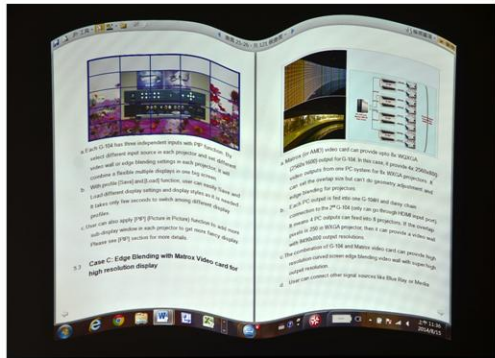
VNS Inc.

www.vnstw.com

GeoBox—More reliable Green product

- Power consumption
 - G400 video wall controller (FHD output) < 4 watts/CH
 - G904 video wall controller (4k2k output) < 9 watts/CH
 - M810 edge blending processor (WUXGA output) < 7 watts/CH
 - UD100 edge blending processor (4k2k output) < 13 watts/CH
- No PC is required.
- Any low power device or media player can serve as signal source.

Warp and geometry alignment



Projector Edge Blending



Large scale Edge Blending system

GeoBox first project worked with Japan TeamLab in Paris. More than 10 big projects in worldwide now.

Reference
Video

TeamLab Tokyo Digital Art Museum used GeoBox to control 470 projectors



Reference
video_Link

Reference
Video

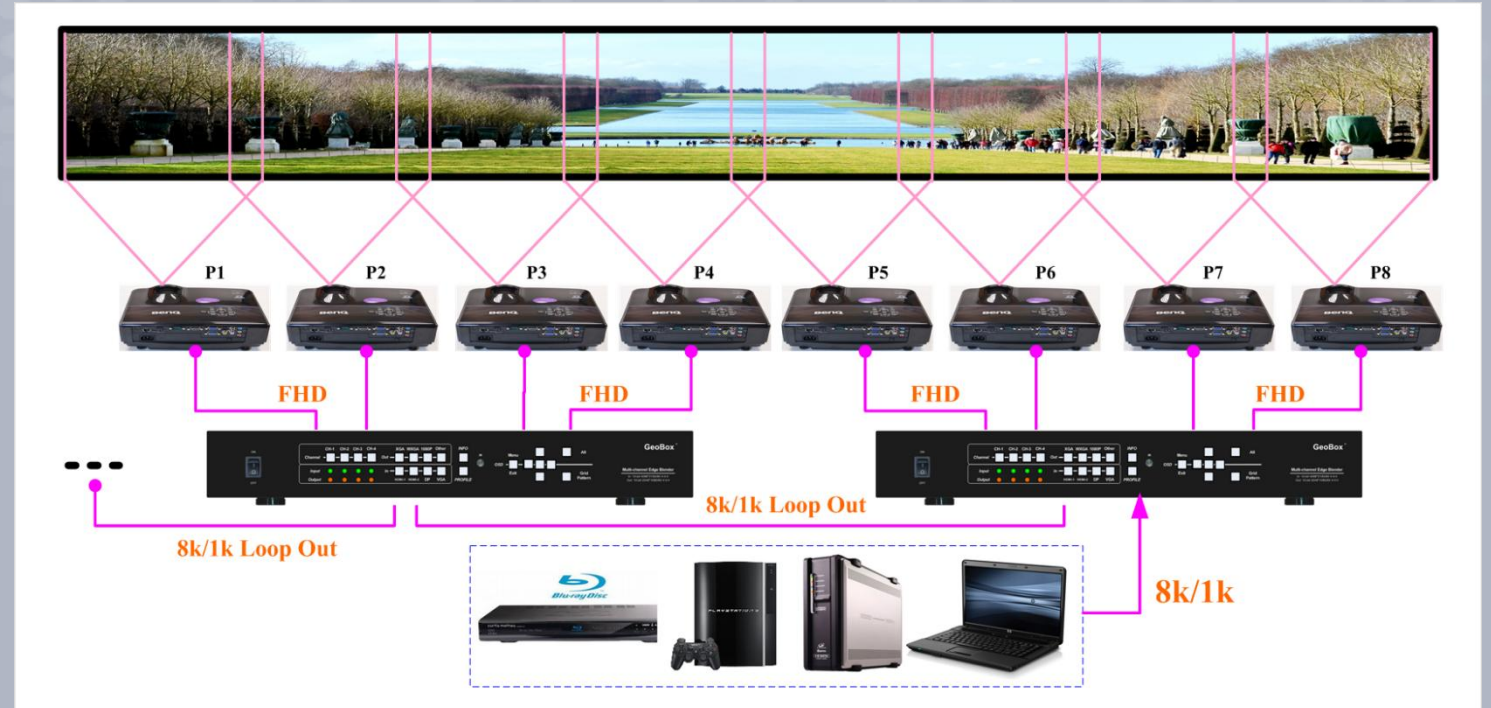
TeamLab Abu Dhabi project. 320 projectors controlled by GeoBox

Reference
video_Link

Korea Gyeongju World Culture Expo

High resolution edge blending

- 8K/2K content can be daisy chain for large scale edge blending.
- No need to use multiple output display card.
- It will simplify the system and reduce the cost.
- Low power consumption is important benefit in the system.
- Higher resolution can be achieved by using multiple output display cards or multiple PC.



Multi-window Display in Edge Blending System

Example for 3 projectors applications

- 1+1+1: 3 independent images.
- 1+2: one independent image and two projector edge blended.
- All-in-one: one image.
- Add PIP/POP to all scenarios.
- UD100 can display 1/2/3/4 images in one projector.
- Different setting can be stored and recalled at any time.

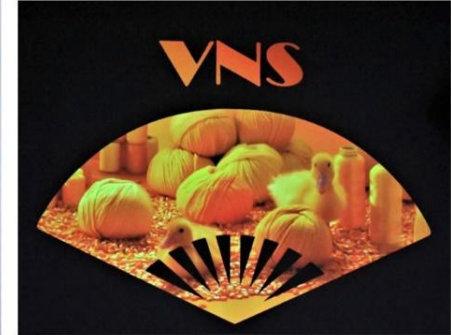


Projection mapping

- M800Ex is designed for projection mapping. Up to 9 monochrome plus one overlap color images can be uploaded in the system.
- User can decide to display the content in black or white area with different background color in blanking area.
- User can execute looping playback with different patterns and switch at desire time interval.
- Any content can be used and no need to mask the content in advance.
- The application can also be applied to LCD/LED or video wall display.

[Reference
vide Link](#)

[Reference
video_Link](#)



Creative video wall

G400 can create video wall with difference size LCD at portrait and landscape directions.



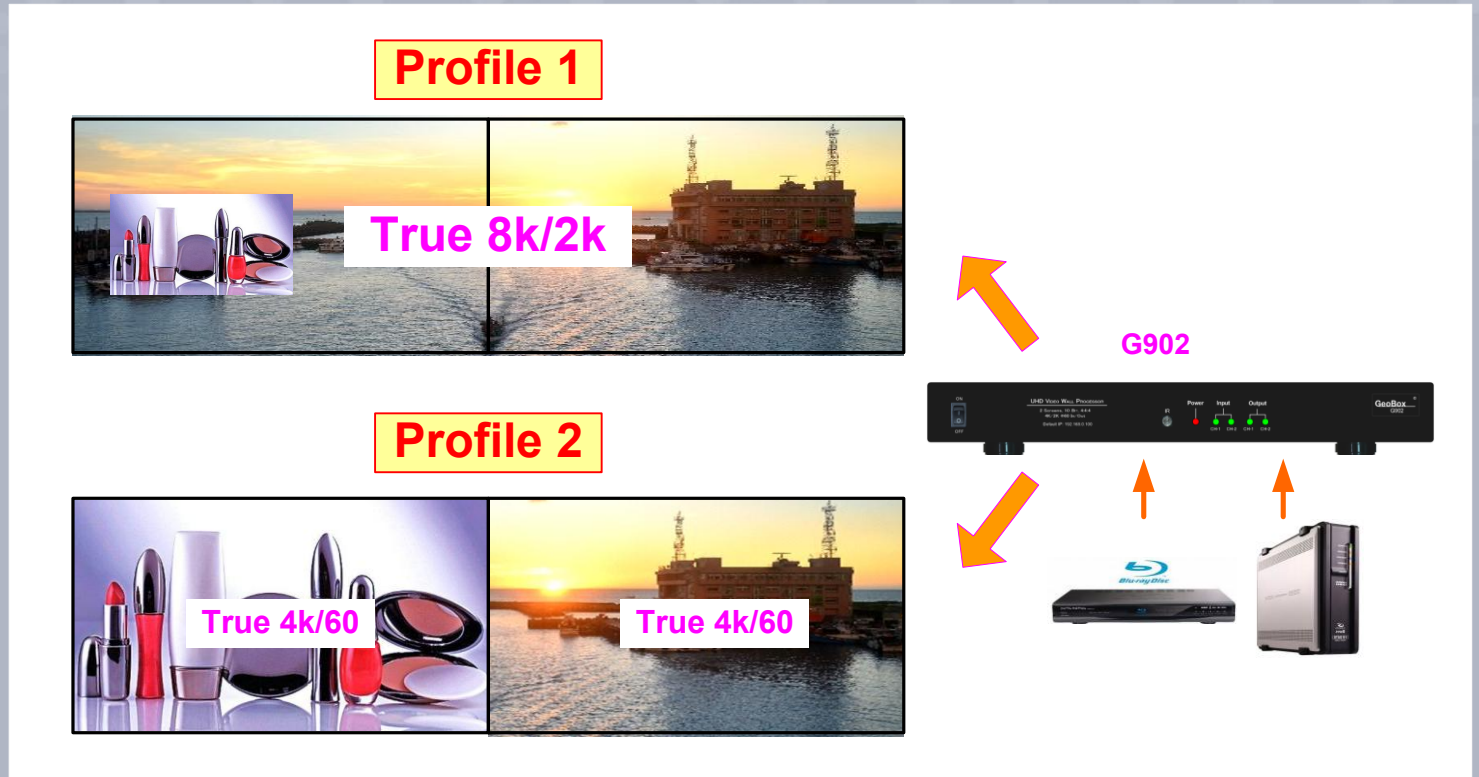
G413 can create video wall with LCD at any angle and location. Different size LCD can be used together.



[Reference video Link](#)

G900 for 4k monitor video wall

- 8k/2k pixel to pixel video wall with PIP/POP.
- Show true 4K/60 content in each 4K monitor



G900 for 4k monitor video wall

- True 4k/60 video wall
- Show pixel to pixel 4k content in each monitor separately
- PIP/POP or 3 split view in each LCD is possible.

Profile-1



Profile-2



4k/60

G904

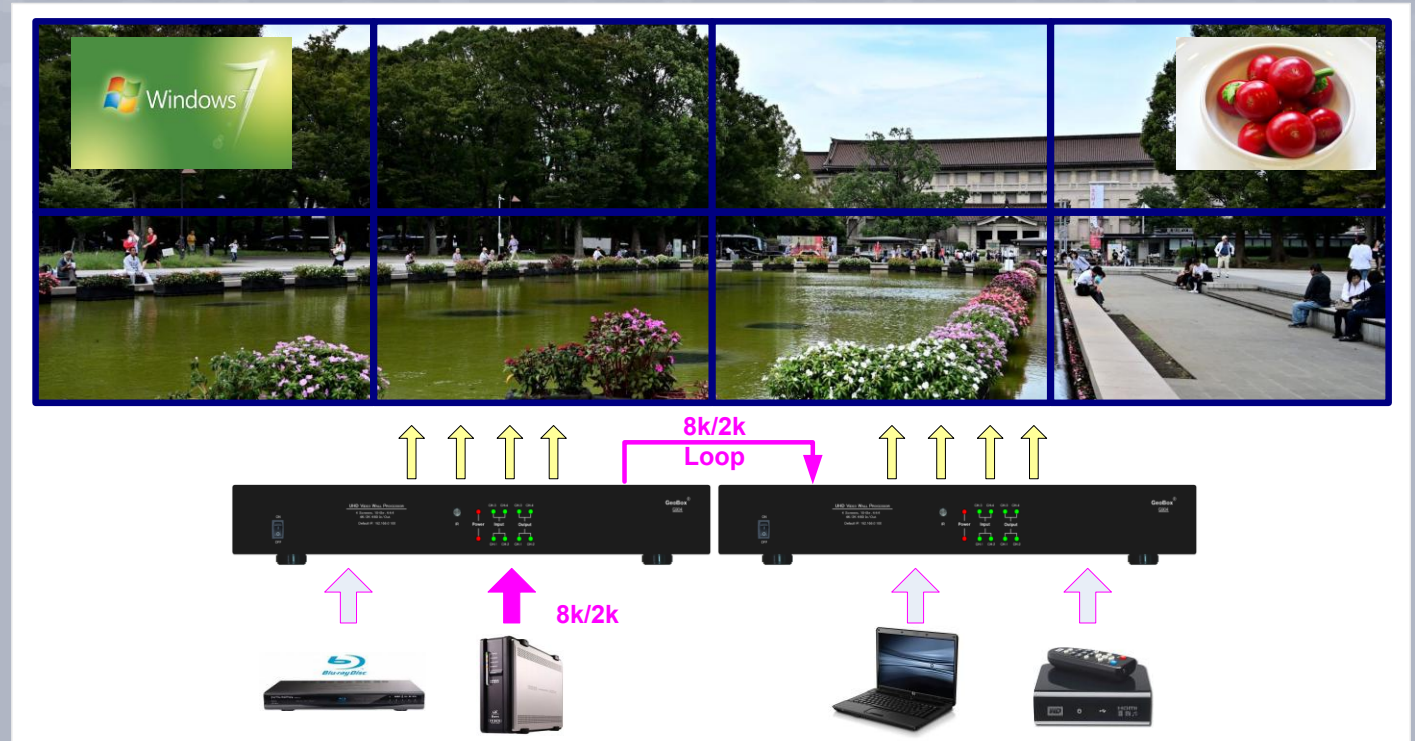


A B C D E

G900 for True 8k/2k video wall

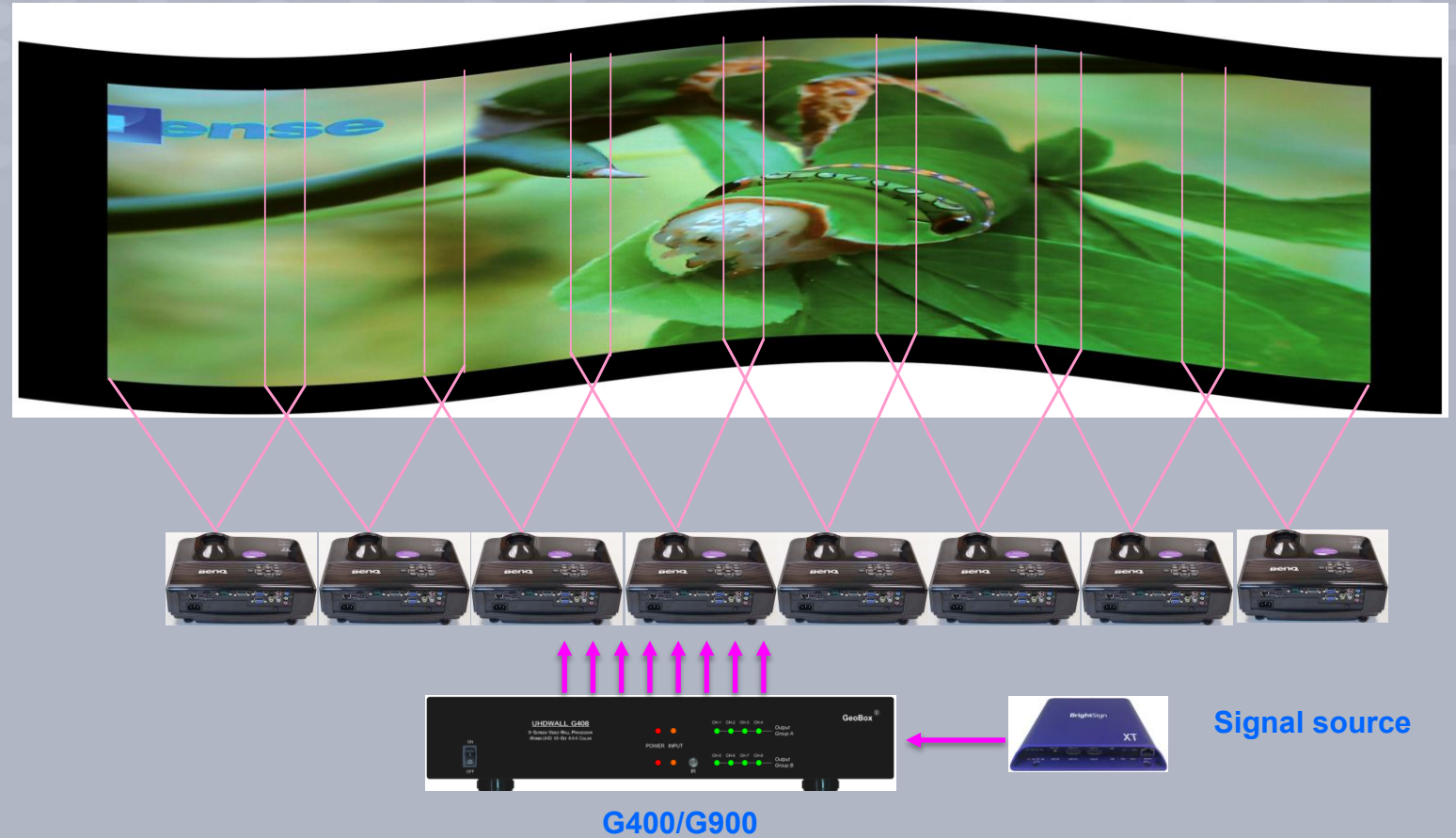
(Pixel to pixel video quality)

- Support 8k/2k@30 signal source.
- Pixel to pixel video quality.
- Display PIP/POP in each LCD.



Video Wall Overlap function for edge blending

- G400/G900 can split the image and set overlap pixels for edge blending system.
- Geometry alignment and edge blending shall be executed in the projectors.
- Max. input resolution is 8k/2k and output resolution is 4k/2k.
- No PC is required.



World Expo-2025 Germany Pavillion



GeoBox video wall controller to crop the image and set overlap pixel for edge blending.

Reference
Video Link



GeoBox video wall controller to crop the image and adjust the image position for projection system.

Reference
Video Link

- 50 units of GeoBox had been used in Osaka World Expo 2025.
- The picture and video show Germany pavilion demo. They used G904 video wall controller to split the image for projector in the whole pavilion.

S914/S915 HDMI 1x4 splitter

Special features

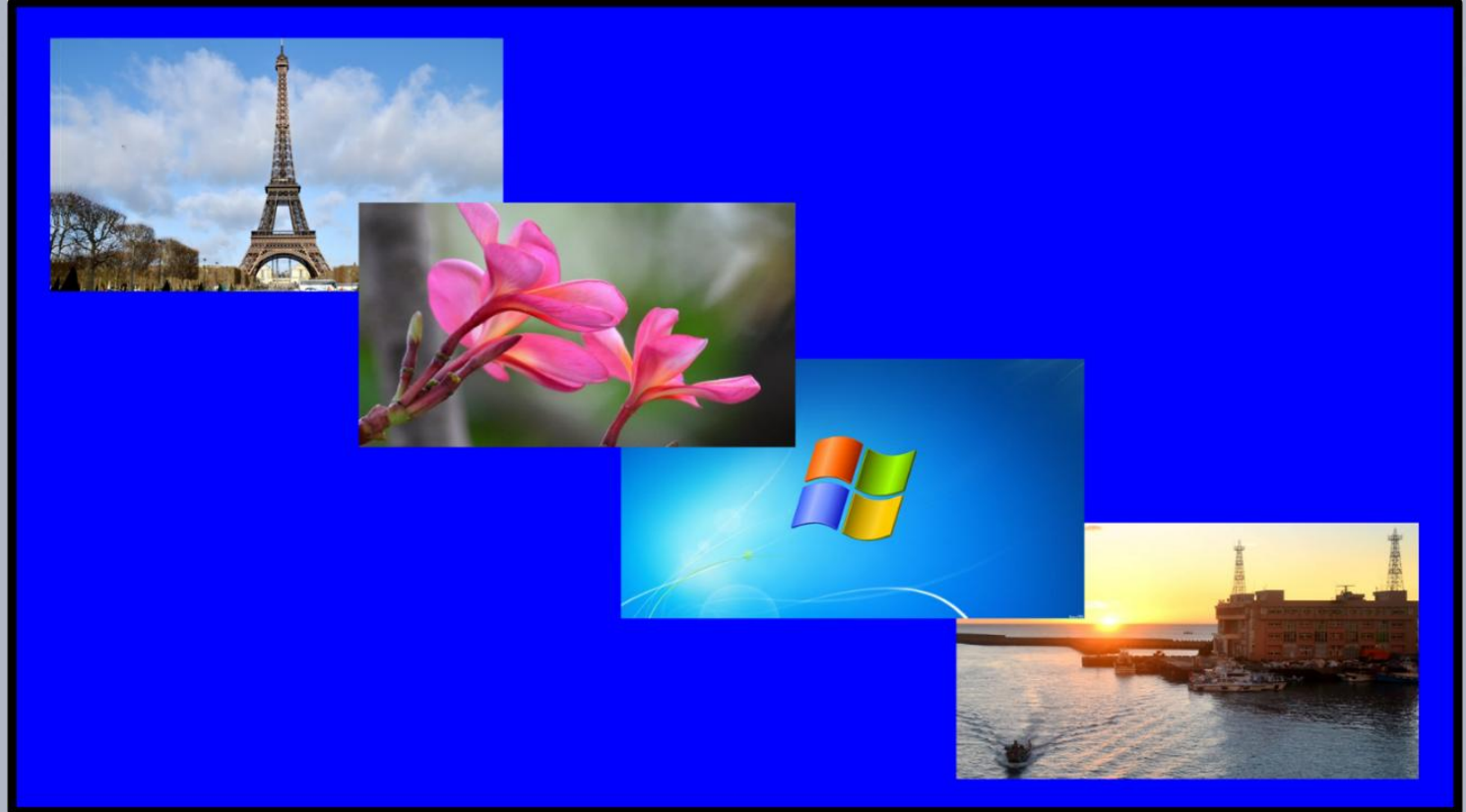
- 8k/4k content can be displayed on 8k and UHD monitors at the same time.
- Support input and output up to 8k/4k/60 resolution.
- With audio output jack.
- The system and each output can be on/off by USB or Ethernet control.

8K content can be displayed at 8K and 4k2k monitors at the same time.



S902 Quad View Processor (1)

- Four 4k Inputs and two 4k Outputs.
- Any image size, position, cropping, overlap priority and aspect ratio.
- Super quick seamless switching and 16 transition effects.
- 3 customized background images.
- Alpha Blending.
- 12 preset layouts and 20 custom layouts. Recalled by real time push button.



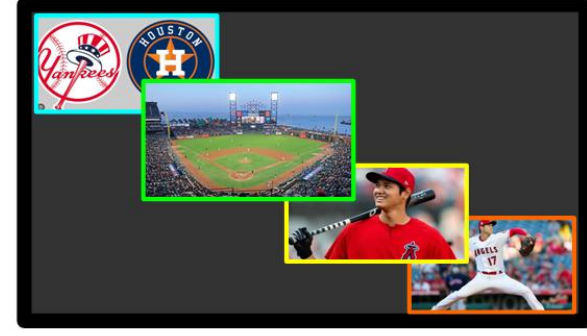
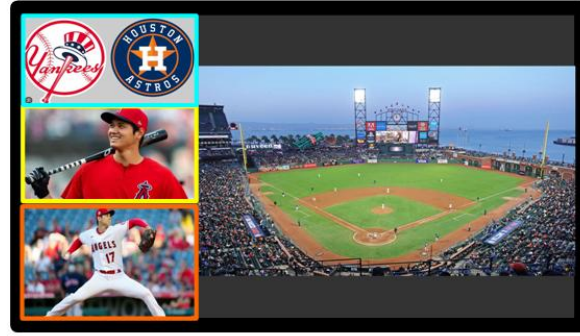
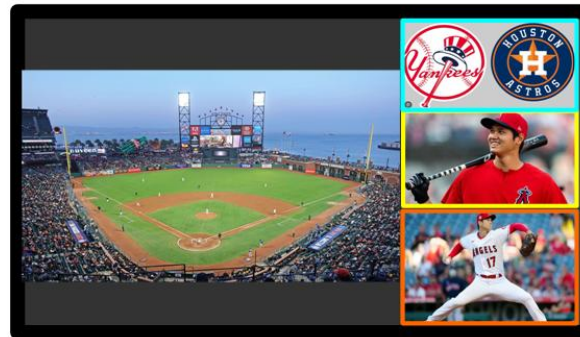
S902 Quad View processor (2)

- S902 as front-end processor to apply all kind of layout up to 4 windows.
- Control by USB, Ethernet, WebUI, UDP, RS232.
- User friendly software Tool for system control via PC, Mobile phone, iPad...
- Best companion for LED, video wall or big scale display.



S902 Flexible Multi-view (3)

- Free layout, flexible image cropping, positioning, aspect ratio, overlap priority.
- 16 transition effect, Seamless switching, Programmable back ground, Alpha blending.
- 2 outputs with different content and layout.



8K Ultra HD processor

MX102 : Dual Outputs

(Input: 2x HDMI2.1 + 1x DP2.1)

MX102 8K4K/60 4:4:4 in 2x 4K UHD Output



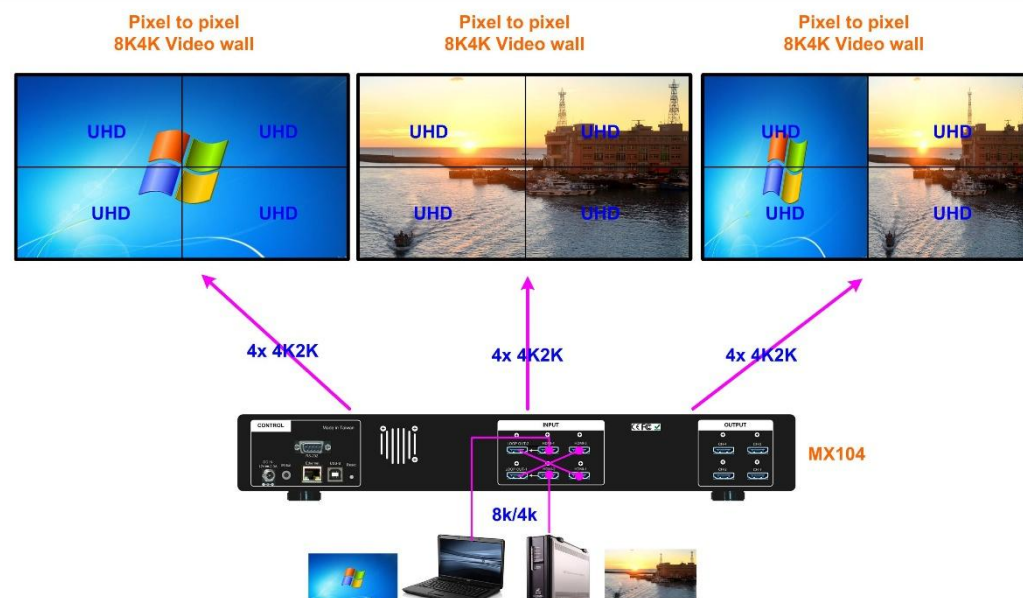
MX104 8K4K/60 4:4:4 in 4x 4K UHD Output



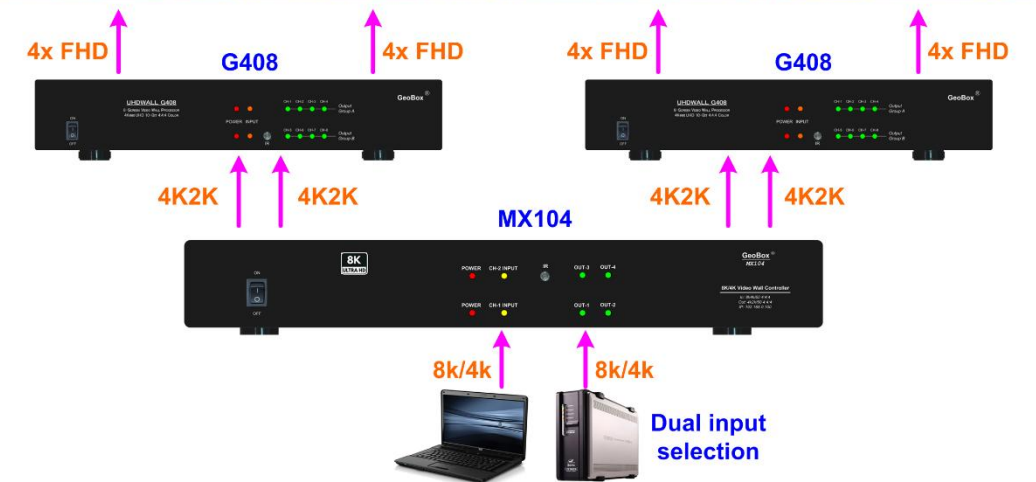
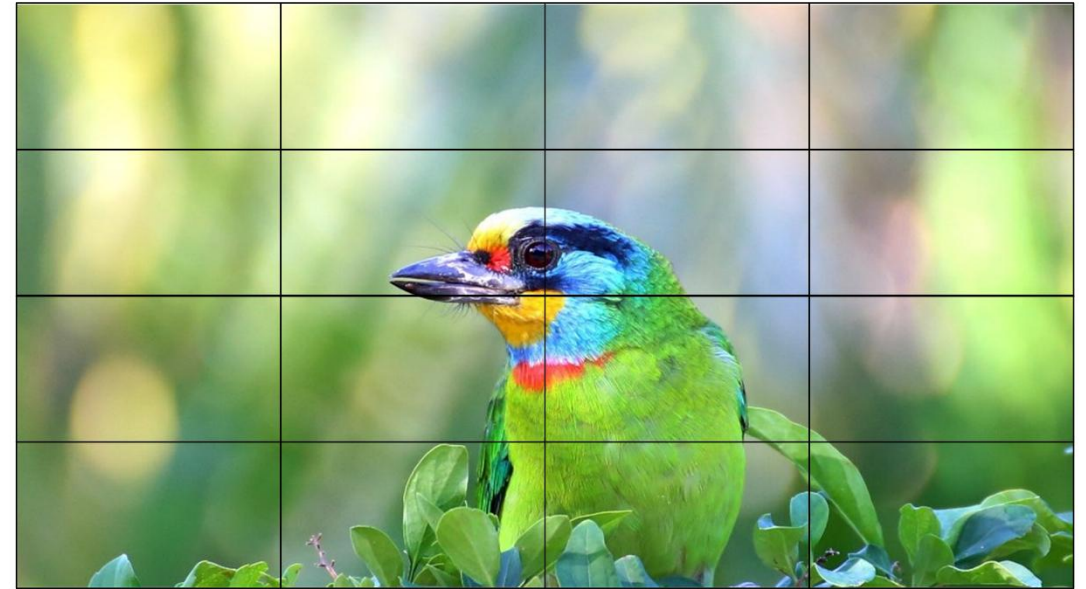
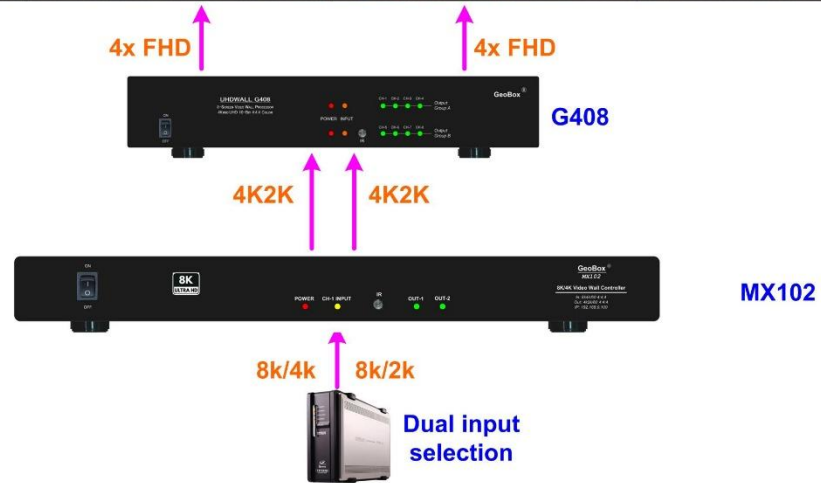
MX104 : Four Outputs

(Input: 4x HDMI2.1 + 2x DP2.1)

Flexible 8K video wall



8K Pixel to Pixel Video Wall



Low-cost Seamless switcher and MultiViewer (G901 & S901)

- Input: 3x HDMI2.0 + 2x DP1.4 , Output: 1x HDMI2.0b
- Input: up to 4096*2160 @60Hz, 7680*2160 @30Hz in HDMI2.0b and 7680*4320 @30Hz in DP1.4
- Programmable Output resolution: 1x HDMI 2.0
H= 800-7680, V=600-3840 (600MHz)
- Selectable output: 24/30/50/60/100/120Hz
- 10 bits deep color output
- PIP/POP & 3/4 MultiViewer
- Window cropping, resizing and rotation
- Seamless switcher for 3x HDMI2.0 + 2x DP1.4 inputs

Major application

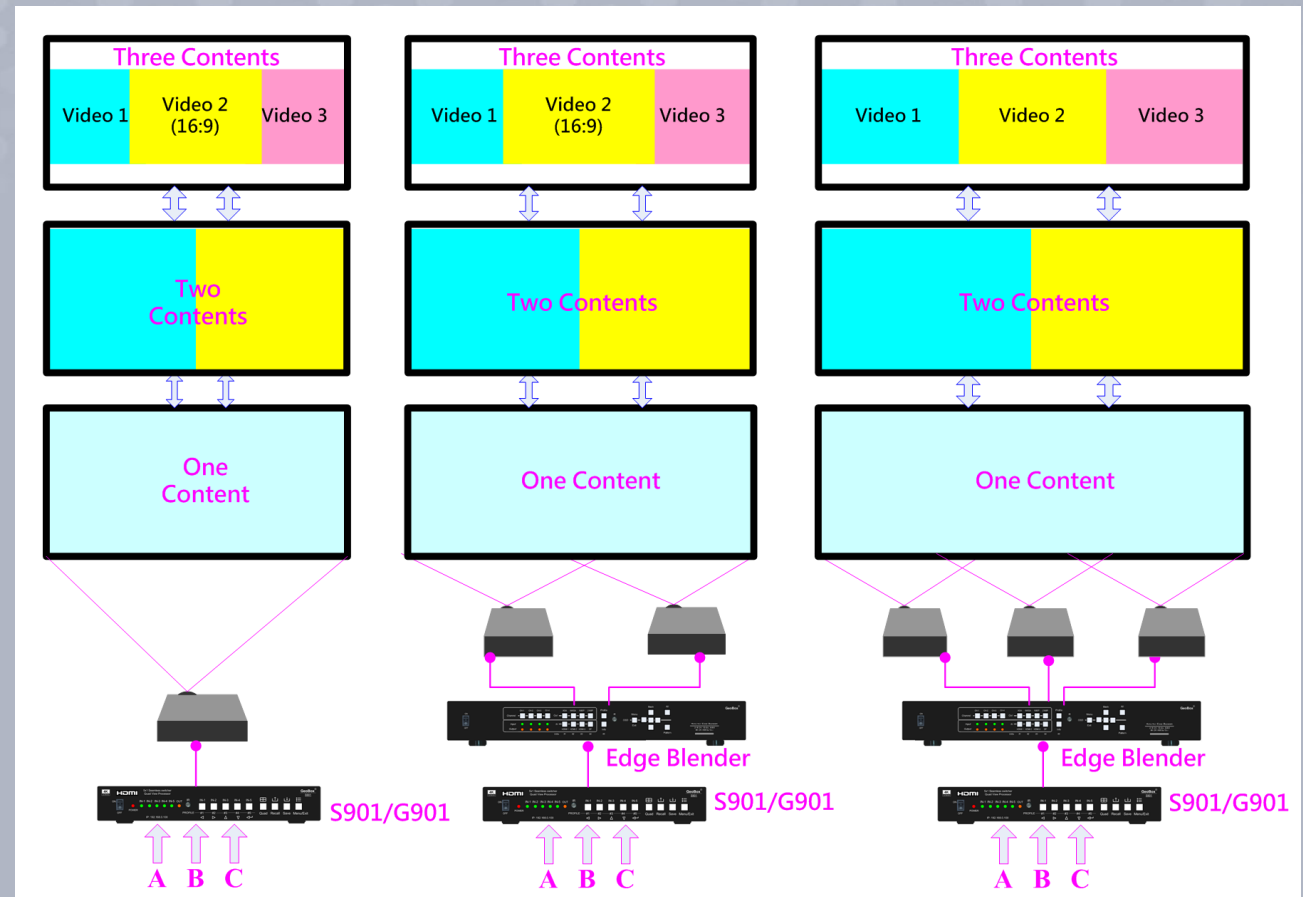
- Front end processor for LED, video wall and edge blending system.
- Resolution up/down scale with any output resolution.
- Rotate and scale mobile image for TV.



Front-end processor (G901/S901)

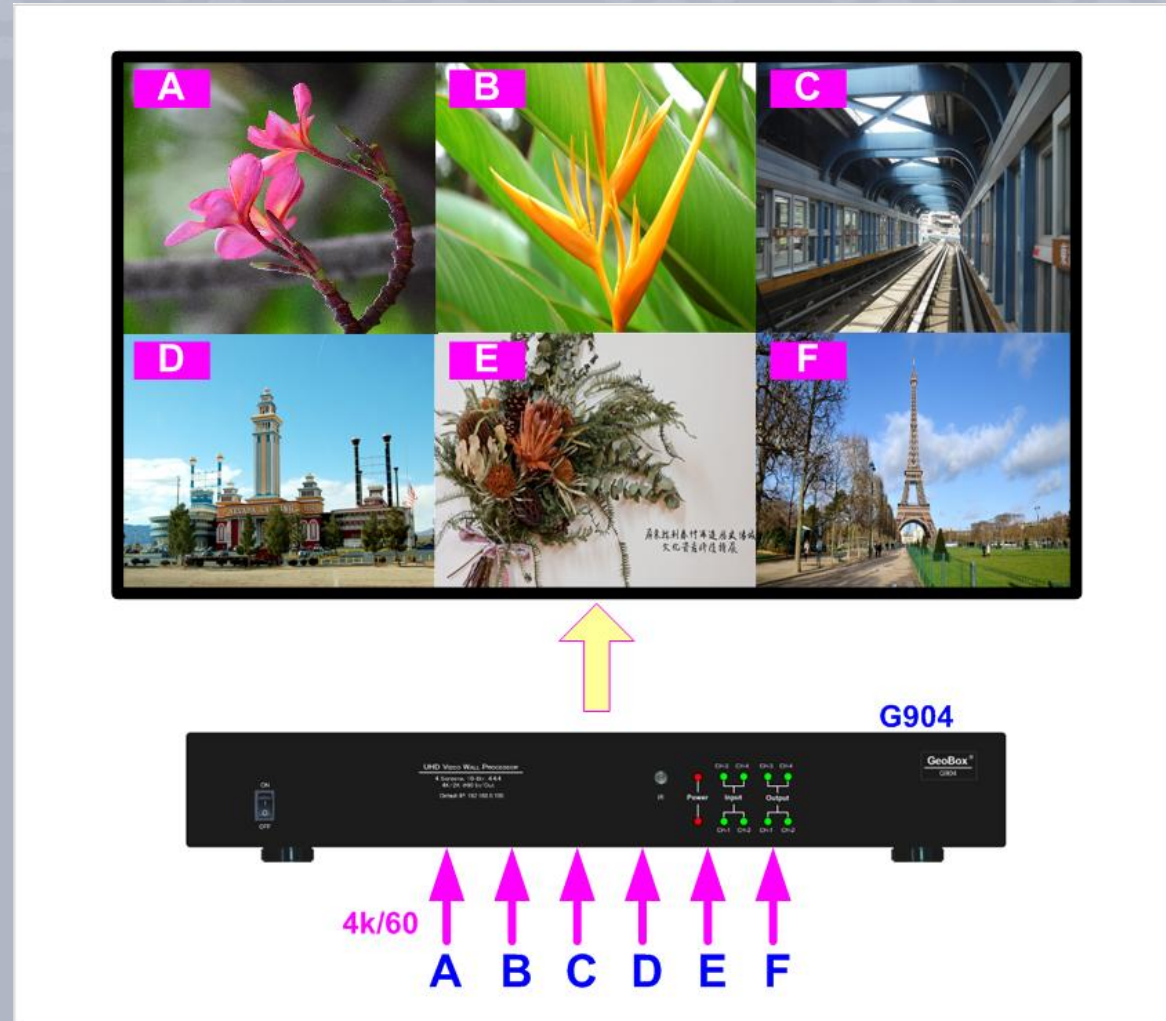
Example for front-end processor:

- Display 1/2/3/4 windows in any display, no matter the display is from single or multiple projectors.
- Support input and output resolution up to 7680*2160.



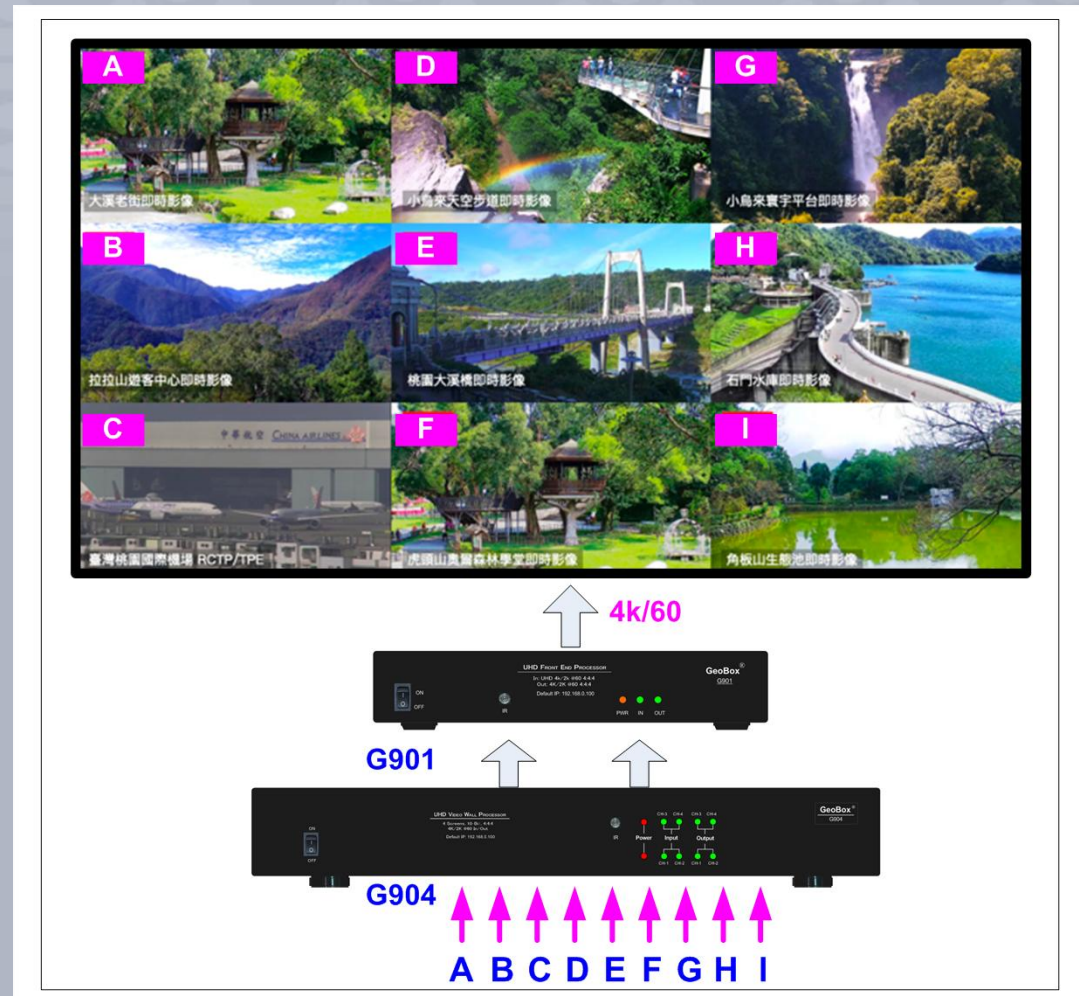
6 split views in one 4k monitor

6 split views at landscape or portrait position with flexible aspect ratio adjustment



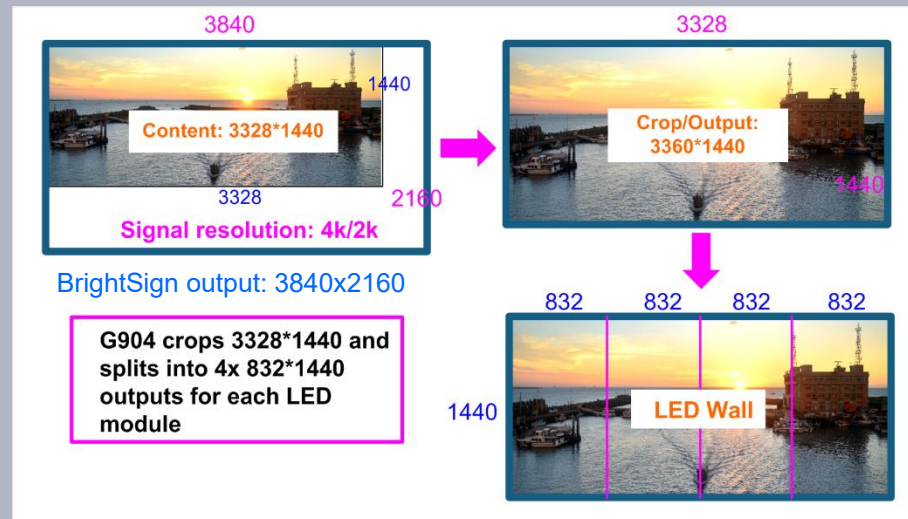
9 split views in one 4k monitor

- 9 split views at landscape or portrait position.
- Multiple G900 can build 12 split views, 16 split views and more in one display.



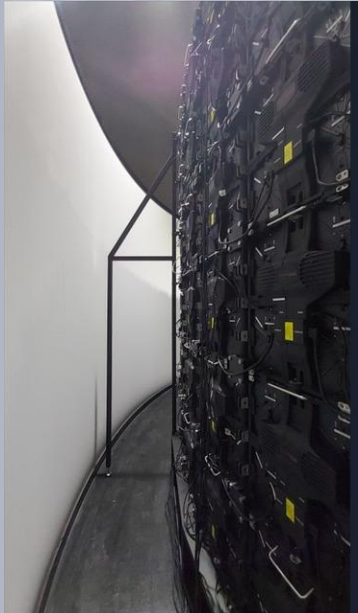
LED applications

- Cropping and split image for LED.
- Pixel to pixel output resolution for LED.
- GeoBox as front-end processor. Serve as seamless switch and display multiple windows with flexible layout.



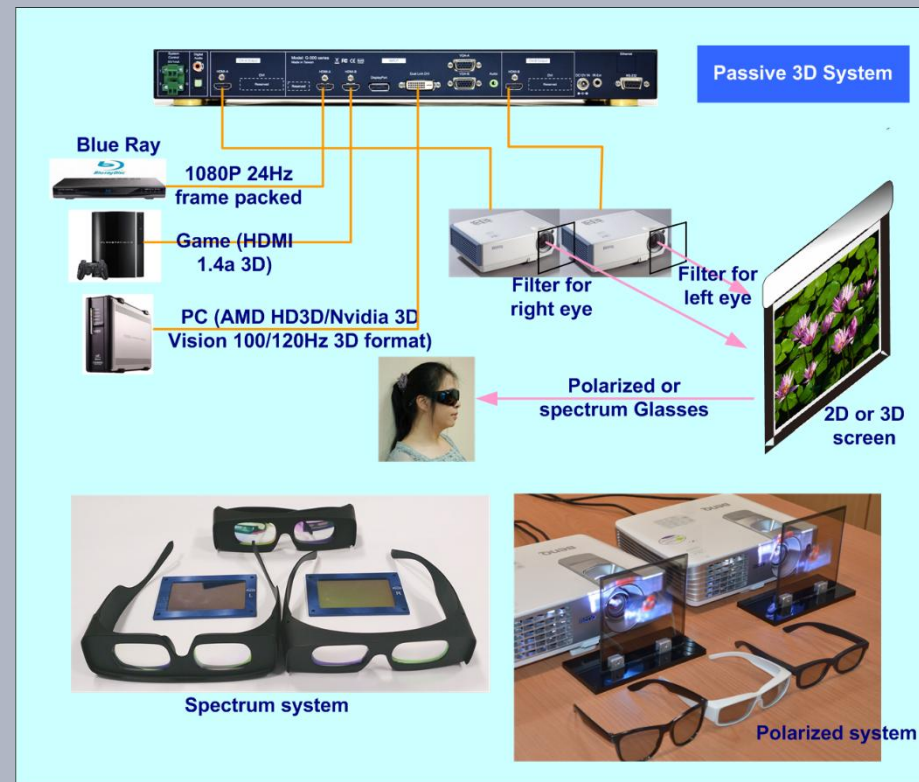
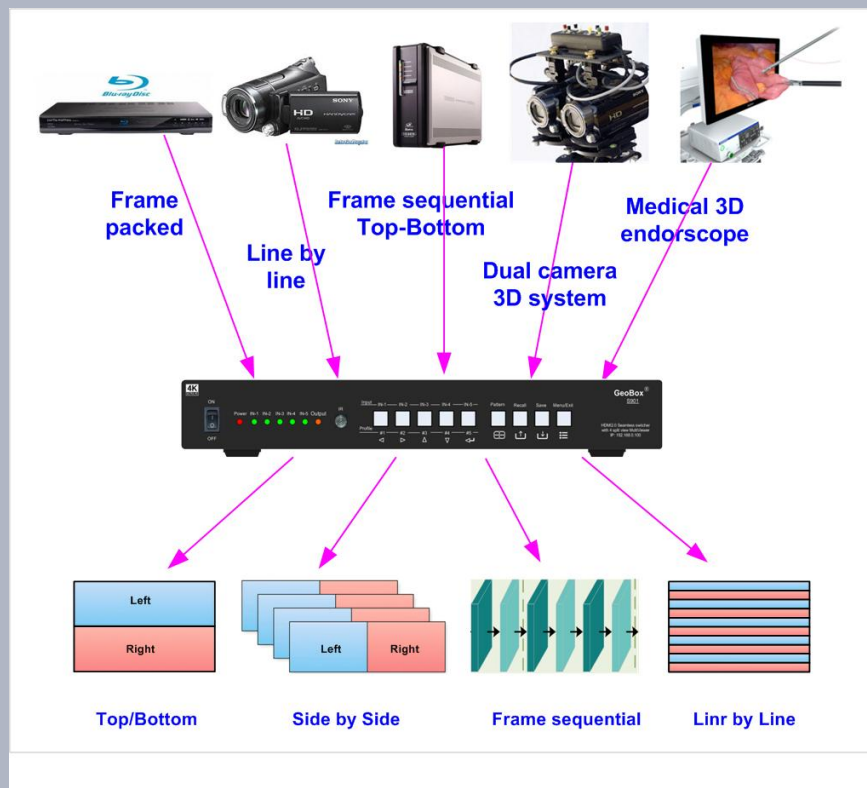
LED simulation system

- All GeoBox edge blenders have programmable output function (G810, M810 and UD100 series).
- Cropping and split image for LED.
- Pixel to pixel output resolution for LED.
- Warp alignment to correct eye FOV bowing distortion.
- Application cases in Korea is to replace projector system.
 - Air Force Education and Training Command (ATC)
 - Korea Automotive Technology Institute (KATECH)
 - Korea Institute of Ocean Science & Technology (KIOST)



3D Applications

- 3D format conversion is important application in medical display.
- It supports all kind of 3D formats and various output formats for 3D display.
- Programmable output resolution and refresh rate.
- Support passive 3D and active 3D with up to 240Hz refresh rate.
- Accurate image stacking to support both 3D/2D display at the same time.



3D Application (2)

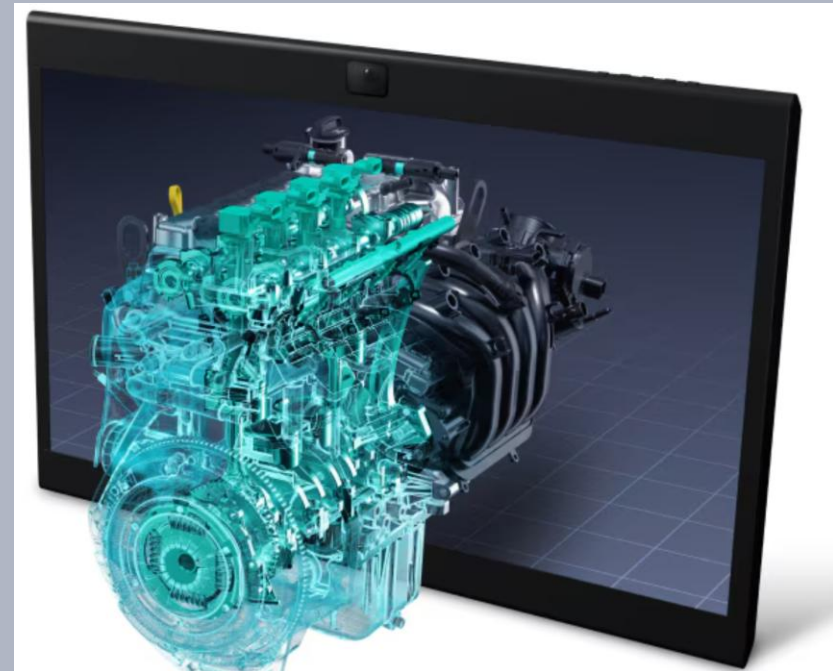
Medical application

- For personal or public view
- Format conversion
- For active or passive 3D display
- Multiview



Sony Spatial Reality Display technology

- Mainly for personal view
- Vision sensor
- Real time rendering 3D content
- Micro lens



Thank You!

Website: <https://www.vnstw.com/>

E-Mail: sales@vnstw.com

Skype: vns-inc

Tel: +886-2-2792-2819